

# Ft. Pierre Livestock.....Friday, Nov 22<sup>nd</sup>

## Big Special Calf & Yrlg Sale

**6000 or more High Quality Calves & Yearlings**  
**Including 800 or more Yrlgs-9 AM CT (8 AM MT)**  
**5000-5200 Spring Clvs 10 AM CT (9 AM MT)**  
**Weighups sell Saturday**

### Yrlgs

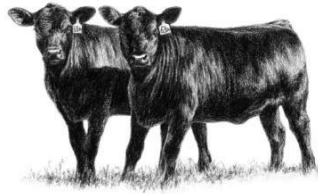
Erling & Linda Olsen, 137 Blk str	900-1025
Erling & Linda Olsen, 66 Red Ang str	1000-1050
Fawcett & McCloud, 60 Blk str	950-1000
Fawcett & McCloud, 120 Red str	950-1000
Randy Neuhauser, 170 Herf str	850-1000
Eric Iversen, 88 Blk PO hfr	750-900
Trent Madsen, 32 Blk spay & PO hfr	700-800
Trent Madsen, 28 Blk & Char str	700-800
Wade Parsons, 25 Blk PO hfr	975-1025
H & J Prtnrshp, 12 Blk open hfr	700-800
Kenny Gesinger, 10 Blk str & hfr (DF)	850-1000
AC Land & Cattle, 6 Blk str (DF)	1000-1100
Brad & Shawna Roghair, 6 Bwf & Herf PO hfr	800-850
Taylor Sonnenschein, 5 Blk PO hfr	950
Ron Schweitzer, 3 Blk str	800-900
Bar Bar V, 2 Blk str & hfr	650

**Plus more high quality yrlgs.**

### Spring Calves

Kirby Farms, 1100 Char X (LT genetics-no brands)	450-675
Lower Brule Tribe, 650 Blk & 1 <sup>st</sup> X Bwf (Bwf-AIT-Topp-Ellingson & Raven genetics)	475-600
Todd & Diann Naber, 500 Ang str (no brands-Wilken & Wilkenson Ang genetics)	400-575
Dave & Ross Cuny, 270 Ang str (Connealey genetics)	550-650
Dave & Ross Cuny, 80 Ang hfr (Connealey genetics)	500-525
Rick & Brent Fox, 330 B,Bwf str (Lucky 7 genetics)	450-600
Ross Reichert, 250 Ang (AIT, hfr-no brands)	450-550
Jim & Deb Anderson, 220 Char X (LT & Roster genetics)	475-600
Art Gregg, 170 Blk (DF-AIT)	450-550
Larry & John Dolezal, 160 B,Bwf str, few hfr	450-550
John & Boe Bauman, 150 Blk str (50 hfr)	450-550
Schuetz Land & Cattle, 140 Herf	400-500
Tom Gesinger, 130 Blk str	550-600
McGee & Campbell, 123 Blk (AIT-no brands)	450-600
Joe Thorne, 100 B,Bwf	450-600
Craig & Sophie McKenzie, 90 Ang str	575-625
Mason Daly, 90 Blk & CharX	450-600
Eileen Uthe, 80 Blk	500-625
Jacob Reichert, 78 B,Bwf	400-550
Kevin Robling, 60 Blk & 1 <sup>st</sup> X Bwf (AIT-no brands)	400-500
Steve Mueller, 50 Blk str	500-600
Delbert Hicks, 40 Mix X	500-550
Hereford Hills, 40 Blk	450-550
Jess Keckler, 40 Blk str (Schiefelbein & LT genetics)	450-550
Jake Duprel, 25 Red & Blk Ang	600-650
Wade Gesinger, 23 Blk & Char X str	500-575
Cade Courier, 12 Red Ang str	450-600
Sam Sheppick, 7 Char X str (wnd)	350-400
Northend Ranch, 7 Blk	400-500
Blake Paxton, 5 Ang hfr	450

**Plus, more packages & part loads of high quality clvs. Including many 3 & low 4 wt clvs.**



**Saturday, Nov 23<sup>rd</sup> - Special Bred Cow & Hfr & Weighup Sale  
Bred Cattle – 1 PM CT (12 Noon MT)**

**1500-2000 Weighups, including Hfrs, Hfrtts, Cowtts, Feeding Cows & Bulls –8 AM CT (7 AM MT)**

**Bred Cattle SM=Solid Mouth BM=Broken Mouth**

***Jacob Reichert Age Disp***, 85 Blk, few Bwf cows (coming 3's) bred Ang, clf 3-10 (60 days)  
cake broke - gentle

***Adam Schmiedt***, 110 Blk hfrs (1100) bred LBW Sonne & Randall Ang, clf 3-1 (10 days)  
vacc/scour program

***Jeff Schneider***, 90 Red hfrs (1000) bred LBW Char, LT Landmark & Pride sons,  
74 hd clf 3-20 (21 days) & 16 hd clf 4-11 (21 days) vacc program

***Shane & Jess Ludemann Cmplt Disp***, 50 Blk cows (SM, few BM) bred Ang, clf 4-8

***Ryan Kruse Clving Disp***, 11 HR Ang cows (3-BM) bred Triangle S Ang, clf 5-15 (45 days)

***Quinten Gerbracht***, 7 HR Ang cows (3-BM) bred Schiefelbein Ang, clf 4-25 (60 days)

***Kenny & Kyler Matt***, 23 B,Bwf BM cows, bred Ang, clf 3-15 (60 days)

***Mitch & Jennifer Schoelerman***, 16 mostly HR Blk cows (SM-BM) bred Ang, clf 4-10 (60 days)

***Merchen & Adrian***, 20 B,Bwf cows (SM-BM) Bwf bred Ang, Blk bred Herf, clf 4-10 (60 days)

***Casey Hannum***, 7 Blk BM cows, bred Blk or Herf, clf 3-15

***Delbert Hicks***, 12 Blk BM cows, bred Herf, clf 4-10 (50 days)

***Vince Bruce***, 20 mostly HR Red Ang cows (SM-BM) bred Red Ang, clf 3-25 (50 days)

***Roger Fiala***, 22 Red cows (SM-BM) bred Blk, clf 3-20

***Keith Jelinek***, 8 Blk cows (SM-BM) bred Blk, clf 3-25 vacc program

***Brad Reis***, 6 Blk cows (SM-BM) bred Blk, clf 3-25

***AC Land & Cattle***, 5 Blk cows (SM-BM) bred Blk, clf 4-5 (60 days)

***Trent Madsen***, 16 Blk BM cows, bred Ang, clf 4-15

***Steve Kost***, 5 mostly HR Blk BM cows, bred Blk, clf 4-5 (60 days)

**Plus more bred cattle by sale day, including 100-200 mostly Blk SM-BM cows.**

**Friday, Nov 29<sup>th</sup> – Annual Thanksgiving Bred Cow & Hfr & Weighup Sale**

**This brand sells also  left hip**

**Friday, Dec 6<sup>th</sup> – Special All Breeds Calf & Yrlg Sale**

**Saturday, Dec 7<sup>th</sup> – Special Bred Cow & Hfr & Weighup Sale**

**Keep supporting R-Calf. They are working for you. If you would like money held out of your check for R-Calf, just let the office know!**

**To All of the Sellers & Buyers Thanks For Your Business!!!**